

network - All Control Panel Items

Control Panel > All Control Panel Items >

Network and Sharing Center
Connect to a network
Set up a virtual private network (VPN) connection
Identify and repair network problems
Set up a virtual private network (VPN) connection
View network computers and devices
View network connections
View network status and tasks
Manage advanced sharing settings
Set up a dial-up connection
Set up a broadband connection
Media streaming options

Troubleshooting
Find and fix networking and connection problems

User Accounts
Manage network passwords

Sync Center

Security and Maintenance
Review your computer's status and resolve issues

Devices and Printers
View devices and printers
Add a device
Advanced printer setup
Device Manager

File History
Save backup copies of your files with File History

System
View system resource usage in Task Manager

Credential Manager
Manage Web Credentials
Manage Windows Credentials

Windows logo | Type here to search | Taskbar icons: File Explorer, Mail, Photos

Control Panel Home

[Change adapter settings](#)

[Change advanced sharing settings](#)

[Media streaming options](#)

View your basic network information and set up connections

View your active networks

IP-WDL-RT150-P4
Public network

Access type: Internet
Connections:  Wi-Fi (IP-WDL-RT150-P4)

Change your networking settings



[Set up a new connection or network](#)

Set up a broadband, dial-up, or VPN connection; or set up a router or access point.



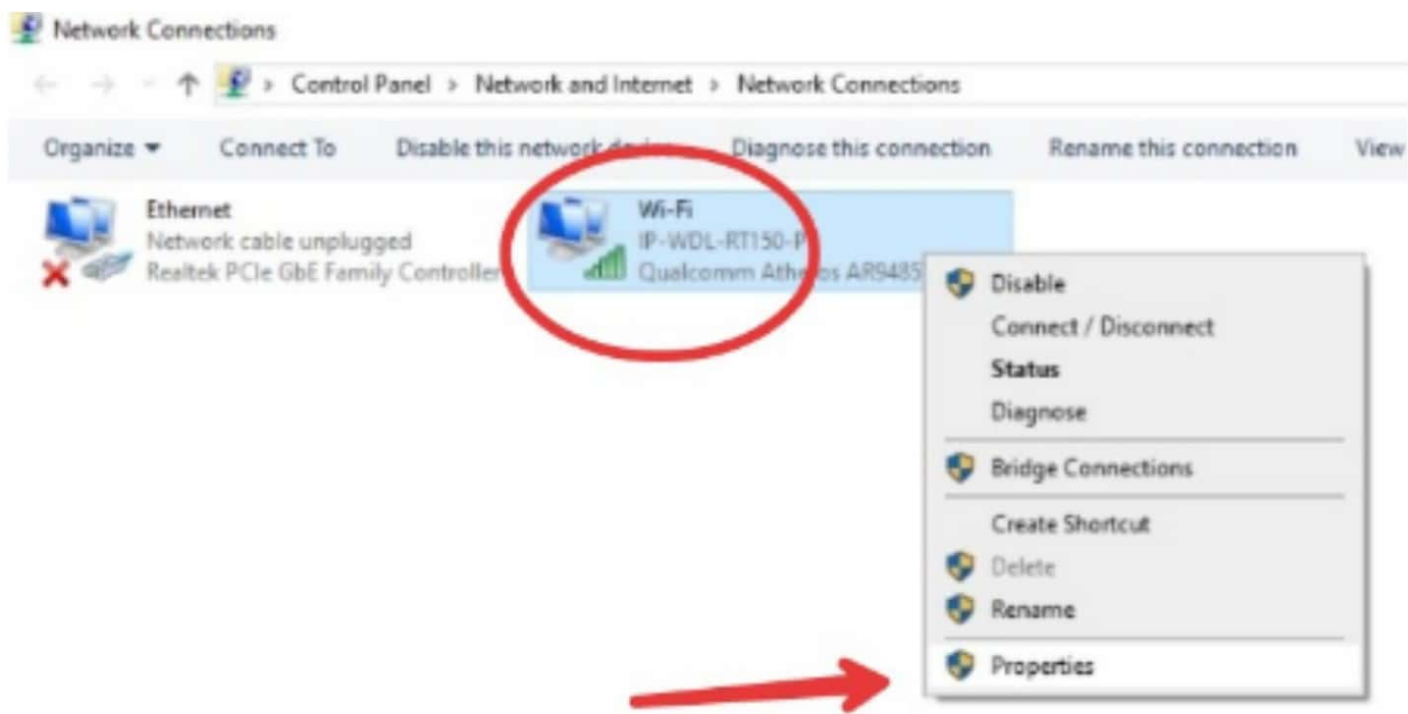
[Troubleshoot problems](#)

Diagnose and repair network problems, or get troubleshooting information.

See also

[Internet Options](#)

[Windows Defender Firewall](#)



Ethernet
Network cable unplugged
Realtek PCIe GbE Family Controller

Wi-Fi
IP-WDL-RT150-P4
Qualcomm Atheros AR9485



Wi-Fi Properties

Networking | Sharing

Connect using:
Qualcomm Atheros AR9485WB-EG Wireless Network Ada
[Configure...](#)

This connection uses the following items:

- GoS Packet Scheduler
- Internet Protocol Version 4 (TCP/IPv4)
- Microsoft Network Adapter Multiplexor Protocol
- Microsoft LLDP Protocol Driver
- Internet Protocol Version 6 (TCP/IPv6)
- Link-Layer Topology Discovery Responder
- Link-Layer Topology Discovery Mapper I/O Driver

[Install...](#) [Uninstall](#) [Properties](#)

Description
Transmission Control Protocol/Internet Protocol. The default wide area network protocol that provides communication across diverse interconnected networks.

[OK](#) [Cancel](#)

Organize ▾

Ethernet
Network cable unplugged
Realtek PCIe GbE Family Controller

Wi-Fi
IP-WDL-RT150-P4
Qualcomm Atheros AR9435

Wi-Fi Properties

Networking | Sharing

Internet Protocol Version 4 (TCP/IPv4) Properties

General | Alternate Configuration

You can get IP settings assigned automatically if your network supports this capability. Otherwise, you need to ask your network administrator for the appropriate IP settings.

Obtain an IP address automatically

Use the following IP address:

IP address: [. . .]
Subnet mask: [. . .]
Default gateway: [. . .]

Obtain DNS server address automatically

Use the following DNS server addresses:

Preferred DNS server: [8 . 8 . 8 . 8]
Alternate DNS server: [. . .]

validate settings upon exit

Advanced...

OK Cancel



2 items